



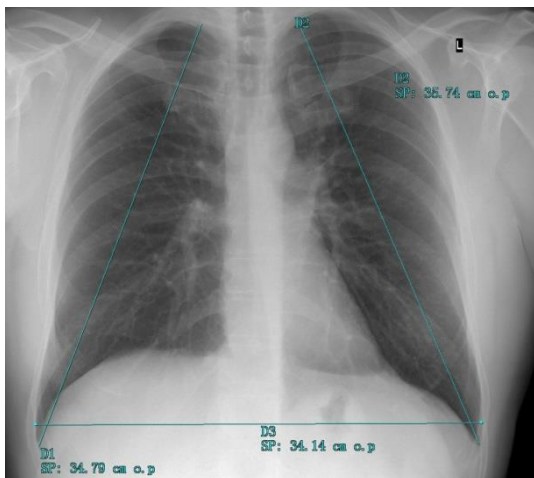
Chest X-ray anatomical dimensions

Dear Colleagues,

Please help the work of our Lung Transplantation Team by providing the following dimensions of the potential donor.

It is necessary to facilitate the allocation process.

- sinus-sinus distance:
- apex-sinus distance (right):
- apex-sinus distance (left):
- dorsal sinus-apex distance:
- sinus-sinus distance (above the diaphragm):
- sinus-sinus distance (above the hilus):



Thank you very much for your help!

HNBS Organ Coordination Office and HBSTP - Semmelweis University Department of Thoracic Surgery

ET donor number:

Donor Hospital:

Date of donation: